

# **E $\flat$ Soprano Cornet Scales & Arpeggios**

---

for Trinity College London exams  
2013-2014

**Grades 6-8**

Published by:  
Trinity College London  
89 Albert Embankment  
London SE1 7TP UK  
T +44 (0)20 7820 6100  
F +44 (0)20 7820 6161  
E [music@trinitycollege.co.uk](mailto:music@trinitycollege.co.uk)  
[www.trinitycollege.co.uk](http://www.trinitycollege.co.uk)

Copyright © 2013 Trinity College London

# E $\flat$ Soprano Cornet

## Grade 6

Candidate to prepare in full *either* Section i) *or* Section ii):

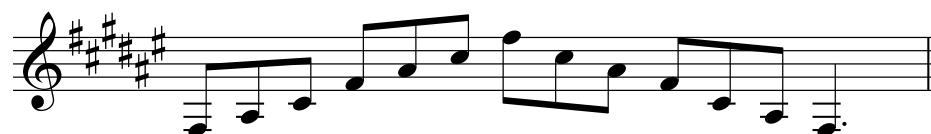
*either* i) Scales and Arpeggios (from memory):

The following scales and arpeggios to be performed *f* or *p*, tongued or slurred or staccato tongued as requested by the examiner (♩ = 72-120)

F $\sharp$  major scale (two octaves)



F $\sharp$  major arpeggio (two octaves)



F $\sharp$  harmonic minor scale (two octaves)



F $\sharp$  melodic minor scale (two octaves)



F $\sharp$  minor arpeggio (two octaves)



A major scale (to 12th)



## Grade 6 continued

A major arpeggio (to 12th)



A harmonic minor scale (to 12th)



A melodic minor scale (to 12th)



A minor arpeggio (to 12th)



Chromatic scale starting on A (to 12th)



Whole-tone scale starting on A (to 12th)



## Grade 6 continued

Augmented arpeggio starting on A (to 12th)



Dominant 7th in the key of A (one octave)\*



Diminished 7th starting on A (to 12th)



or ii) Exercises:

Candidates should prepare the following:

- |          |                                     |
|----------|-------------------------------------|
| Lawrence | 35. Triple Digit Accidental Twister |
| Lawrence | 39. Summing Up Again                |
| Lawrence | 40b. Short 'n' Sharp                |

All exercises are contained in the book *Graded Exercises and Studies for Trumpet and Other Valved Brass Instruments* published by Faber Music 0-571-53727-8.

\*If preferred, the dominant 7th may be finished on the starting note rather than resolving onto the tonic.

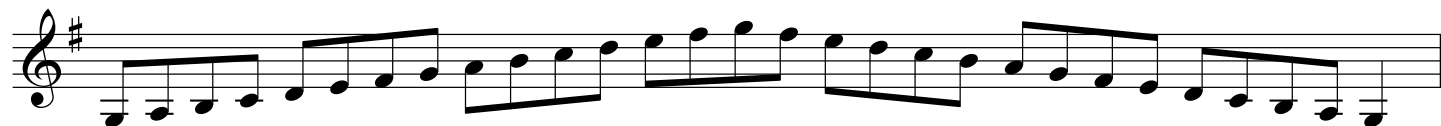
# Grade 7

Candidate to prepare in full *either* Section i) or Section ii):

*either* i) Scales and Arpeggios (from memory):

The following scales and arpeggios to be performed *f* or *p*, tongued or slurred or staccato tongued as requested by the examiner (♩ = 80-126):

G major scale (two octaves)



G major arpeggio (two octaves)



G harmonic minor scale (two octaves)



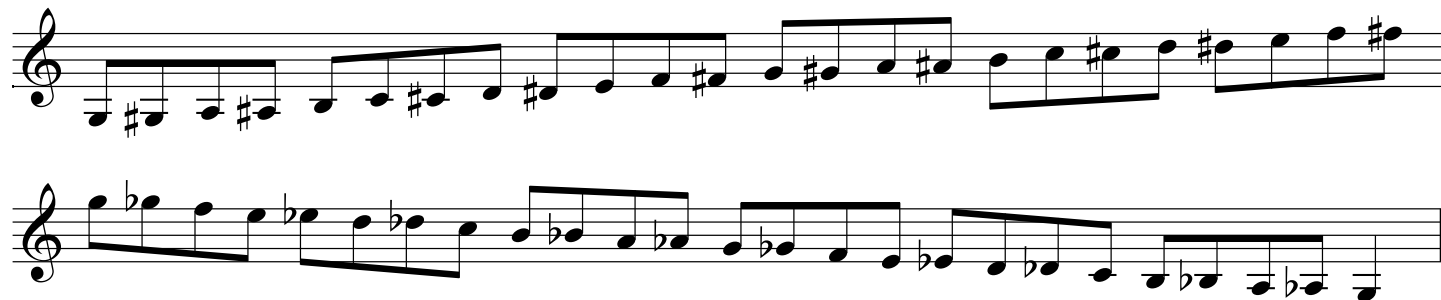
G melodic minor scale (two octaves)



G minor arpeggio (two octaves)



Chromatic scale starting on G (two octaves)

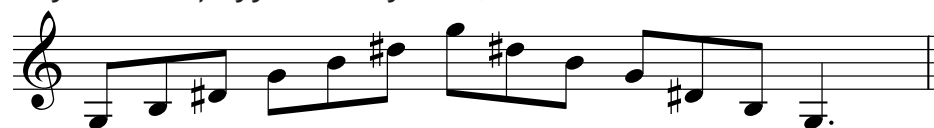


Whole-tone scale starting on G (two octaves)



## Grade 7 continued

Augmented arpeggio starting on G (two octaves)



Dominant 7th in the key of G (one octave)\*



Diminished 7th starting on G (two octaves)



Bb major scale (to 12th)



## Grade 7 continued

Chromatic scale starting on B $\flat$  (to 12th)



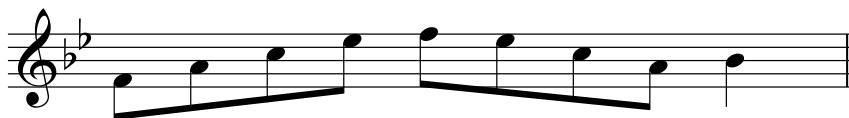
Whole-tone scale starting on B $\flat$  (to 12th)



Augmented arpeggio starting on B $\flat$  (to 12th)



Dominant 7th in the key of B $\flat$  (one octave)\*



Diminished 7th starting on B $\flat$  (to 12th)



or ii) Exercises:

Candidates should prepare the following:

Lawrence	23. Chops Factor IV
Lawrence	49. The Twister!
Lawrence	57. Back Finger Study

All exercises are contained in the book *Graded Exercises and Studies for Trumpet and Other Valved Brass Instruments* published by Faber Music 0-571-53727-8.

\*If preferred, the dominant 7th may be finished on the starting note rather than resolving onto the tonic.

# Grade 8

Candidate to prepare in full *either* Section i) *or* Section ii):

*either* i) Scales and Arpeggios (from memory):

The following scales and arpeggios to be performed *f* or *p*, tongued or slurred or staccato tongued or slurred in pairs (scales only), as requested by the examiner (♩ = 88-132):

F# major scale (two octaves)



F# major arpeggio (two octaves)



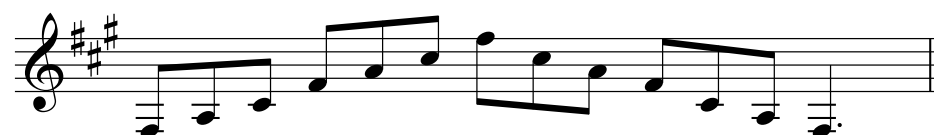
F# harmonic minor scale (two octaves)



F# melodic minor scale (two octaves)



F# minor arpeggio (two octaves)



Chromatic scale starting on F# (two octaves)





### Grade 8 continued

### Whole-tone scale starting on F# (two octaves)



### Augmented arpeggio starting on F# (two octaves)



**Dominant 7th in the key of F# (one octave)\***



Diminished 7th starting on F# (two octaves)



### Ab major scale (two octaves)



Ab major arpeggio (two octaves)



**A<sup>b</sup> harmonic minor scale (two octaves)**



**A $\flat$  melodic minor scale (two octaves)**



### Ab minor arpeggio (two octaves)



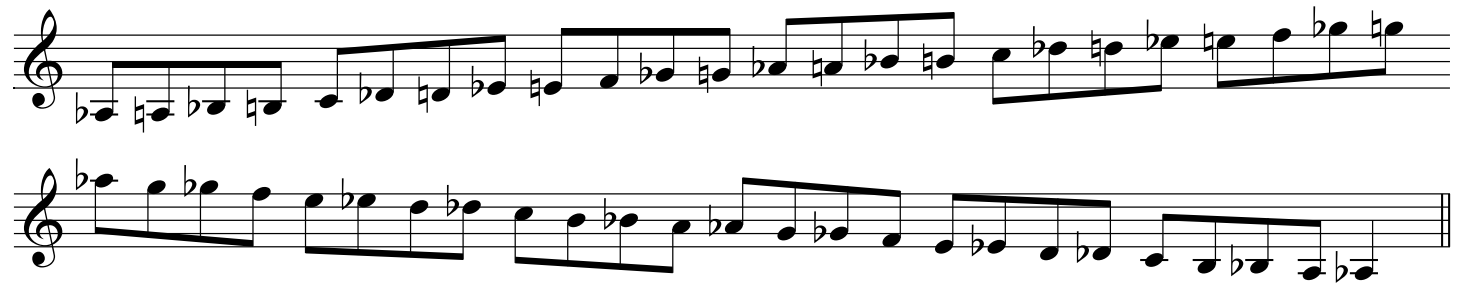
\*If preferred, the dominant 7th may be finished on the starting note rather than resolving onto the tonic.

## Grade 8 continued

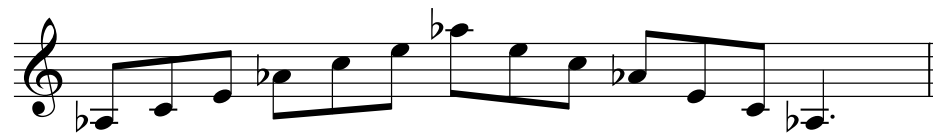
Whole-tone scale starting on A $\flat$  (two octaves)



Chromatic scale starting on A $\flat$  (two octaves)



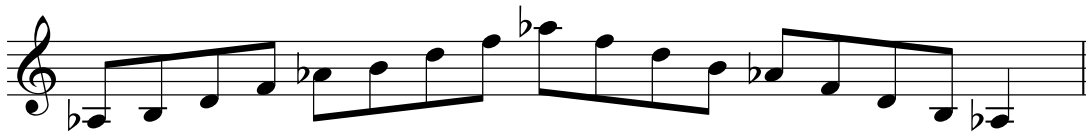
Augmented arpeggio starting on A $\flat$  (two octaves)



Dominant 7th in the key of A $\flat$  (one octave)\*



Diminished 7th starting on G $\sharp$ /A $\flat$  (two octaves)



A major scale (two octaves)



A major arpeggio (two octaves)



A harmonic minor scale (two octaves)



\*If preferred, the dominant 7th may be finished on the starting note rather than resolving onto the tonic.

## Grade 8 continued

A melodic minor scale (two octaves)



A minor arpeggio (two octaves)



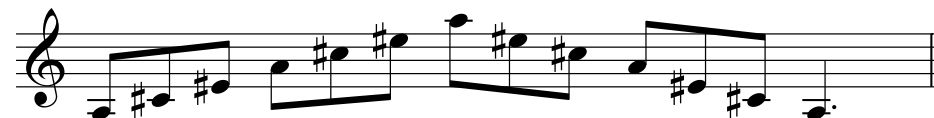
Chromatic scale starting on A (two octaves)



Whole-tone scale starting on A (two octaves)



Augmented arpeggio starting on A (two octaves)



Dominant 7th in the key of A (one octave)\*



Diminished 7th starting on A (two octaves)



\*If preferred, the dominant 7th may be finished on the starting note rather than resolving onto the tonic.

## Grade 8 continued

Crabwise scale from G (two octaves - tongued or slurred as indicated)



Crabwise scale from F# (two octaves - tongued or slurred as indicated)



or ii) Exercises:

Candidates should prepare the following:

- Lawrence 61. Legato finale
- Lawrence 62. Fingers Finale
- Lawrence 63. Staccatissimo Finale

All exercises are contained in the book *Graded Exercises and Studies for Trumpet and Other Valved Brass Instruments* published by Faber Music 0-571-53727-8.