

Tuba in F

Scales & Arpeggios

for Trinity College London
Bass Clef F Tuba exams
2013-2014

Grades 1-8

Published by:
Trinity College London
89 Albert Embankment
London SE1 7TP UK
T +44 (0)20 7820 6100
F +44 (0)20 7820 6161
E music@trinitycollege.co.uk
www.trinitycollege.co.uk

Copyright © 2013 Trinity College London

Grade 1

Candidate to prepare in full *either* Section i) *or* Section ii):

either i) Scales and Arpeggios (from memory):

The following scales and arpeggios to be performed *mf* and tongued (♩ = 46-60):

F major scale (one octave)



F major arpeggio (one octave)



Candidates choice of natural *or* harmonic *or* melodic form of the minor, as follows:

D natural minor scale (one octave)



or

D harmonic minor scale (one octave)



or

D melodic minor scale (one octave)



D minor arpeggio (one octave)



or ii) Exercises:

Candidates to prepare the following:

Lawrence 1b. Getting Started

Lawrence 3b. A Low Trick

Lawrence 4b. Limbering Down

Exercises for treble clef players (B♭) are contained in the book *Graded Exercises and Studies for Trumpet and Other Valved Brass Instruments* published by Faber Music 0-571-53727-8. Exercises for bass clef players are contained in *Selected Exercises and Studies for Tuba (E♭)* available to download by grade from www.trinitycollege.co.uk/digital

Grade 2

Candidate to prepare in full *either* Section i) *or* Section ii):

either i) Scales and Arpeggios (from memory):

The following scales and arpeggios to be performed *mf*, tongued or slurred as requested by the examiner (♩ = 50-66):

G major scale (one octave)



G major arpeggio (one octave)



Candidates choice of natural *or* harmonic *or* melodic form of the minor, as follows:

D natural minor scale (one octave)



or

D harmonic minor scale (one octave)



or

D melodic minor scale (one octave)



D minor arpeggio (one octave)



E♭ major scale (one octave)



E♭ major arpeggio (one octave)



Grade 2 continued

or ii) Exercises:

Candidates to prepare the following:

Lawrence 5. Lip Push-Ups!

Lawrence 13. The One-Meter Sloth Race

Lawrence 15. Out of the Box

Exercises for treble clef players (B♭) are contained in the book *Graded Exercises and Studies for Trumpet and Other Valved Brass Instruments* published by Faber Music 0-571-53727-8.

Exercises for bass clef players are contained in *Selected Exercises and Studies for Tuba (E♭)* available to download by grade from www.trinitycollege.co.uk/digital

Grade 3

Candidate to prepare in full *either* Section i) *or* Section ii):

either i) Scales and Arpeggios (from memory):

The following scales and arpeggios to be performed *mf*, tongued *or* slurred as requested by the examiner (♩ = 54-72):

F harmonic minor scale (one octave)



or

F melodic minor scale (one octave)



F minor arpeggio (one octave)



Whole-tone scale starting on F (one octave)



A \flat major scale (one octave)



A \flat major arpeggio (one octave)



A major scale (one octave)



Grade 3 continued

A major arpeggio (one octave)



A harmonic minor scale (one octave)



or

A melodic minor scale (one octave)



A minor arpeggio (one octave)



or ii) Exercises:

Candidates to prepare the following:

Lawrence 14. The Drunken Sailor Sobers Up!

Lawrence 16. Snakes and Ladders

Lawrence 20. Chops Factor I

Exercises for treble clef players (Bb) are contained in the book *Graded Exercises and Studies for Trumpet and Other Valved Brass Instruments* published by Faber Music 0-571-53727-8.

Exercises for bass clef players are contained in *Selected Exercises and Studies for Tuba (Eb)* available to download by grade from www.trinitycollege.co.uk/digital

Grade 4

Candidate to prepare in full *either* Section i) *or* Section ii):

either i) Scales and Arpeggios (from memory):

The following scales and arpeggios to be performed *mf*, tongued *or* slurred as requested by the examiner (♩ = 60-104):

Chromatic scale starting on F (one octave)



G harmonic minor scale (one octave)

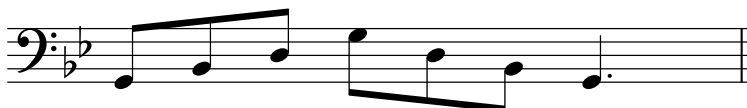


or

G melodic minor scale (one octave)



G minor arpeggio (one octave)



Bb major scale (one octave)



Bb major arpeggio (one octave)



Grade 4 continued

B \flat harmonic minor scale (one octave)

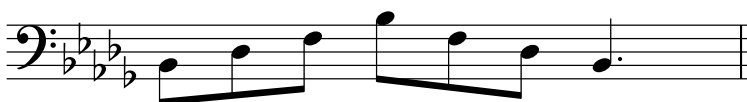


or

B \flat melodic minor scale (one octave)



B \flat minor arpeggio (one octave)



Whole-tone scale starting on B \flat (one octave)



E \flat major scale (to 12th)



E \flat major arpeggio (to 12th)



or ii) Exercises:

Candidates to prepare the following:

Lawrence 17a. Cool Marché

Lawrence 21. Chops Factor II

Lawrence 30. As Fast as You Can

Exercises for treble clef players (B \flat) are contained in the book *Graded Exercises and Studies for Trumpet and Other Valved Brass Instruments* published by Faber Music O-571-53727-8.

Exercises for bass clef players are contained in *Selected Exercises and Studies for Tuba (E \flat)* available to download by grade from www.trinitycollege.co.uk/digital

Grade 5

Candidate to prepare in full *either* Section i) *or* Section ii):

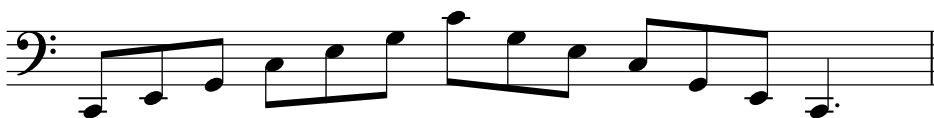
either i) Scales and Arpeggios (from memory):

The following scales and arpeggios to be performed *mf*, tongued or slurred as requested by the examiner (♩ = 66-112):

C major scale (two octaves)



C major arpeggio (two octaves)



C harmonic minor scale (two octaves)



or

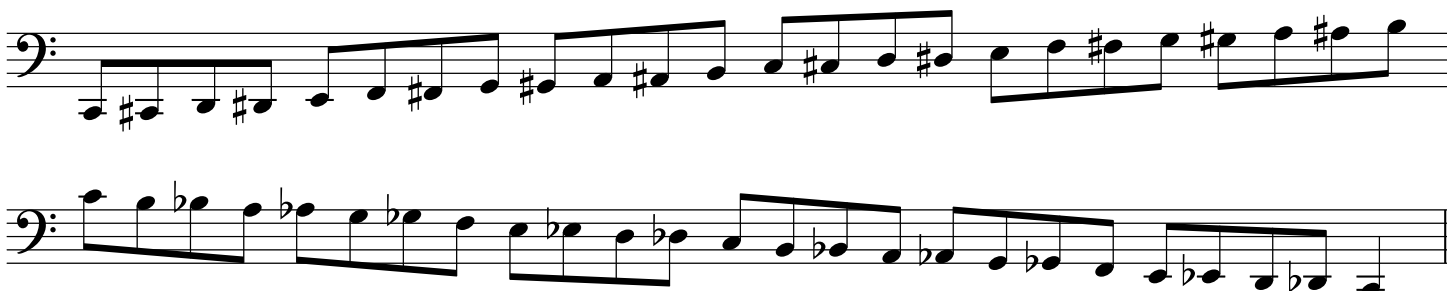
C melodic minor scale (two octaves)



C minor arpeggio (two octaves)



Chromatic scale starting on C (two octaves)



Grade 5 continued

Whole-tone scale starting on C (two octaves)



Grade 6

Candidate to prepare in full *either* Section i) *or* Section ii):

either i) Scales and Arpeggios (from memory):

The following scales and arpeggios to be performed *f* or *p*, tongued or legato tongued as requested by the examiner
(♩ = 72-120):

B major scale (two octaves)



B major arpeggio (two octaves)



B harmonic minor scale (two octaves)



B melodic minor scale (two octaves)



B minor arpeggio (two octaves)



D major scale (two octaves)



D major arpeggio (two octaves)



Grade 6 continued

D harmonic minor scale (two octaves)



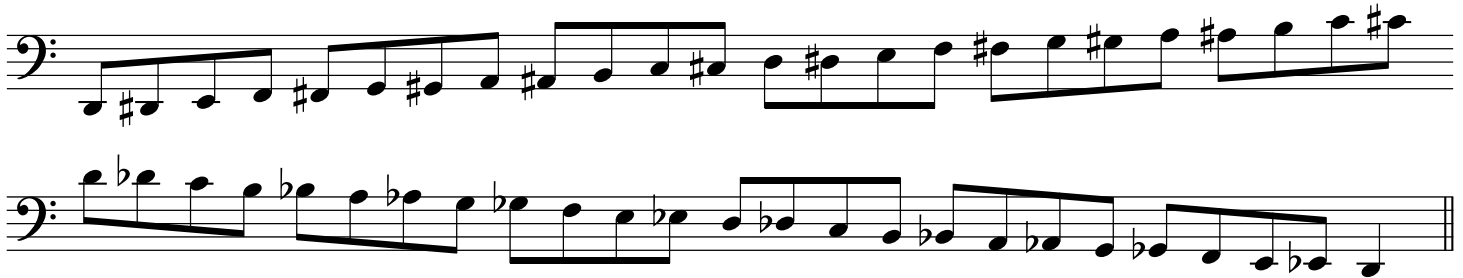
D melodic minor scale (two octaves)



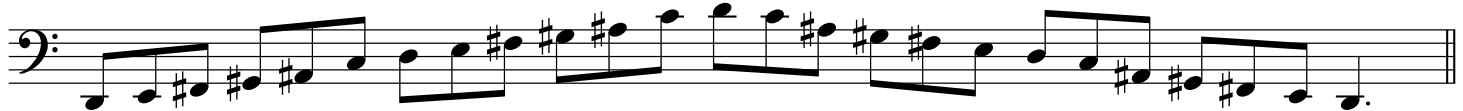
D minor arpeggio (two octaves)



Chromatic scale starting on D (two octaves)



Whole-tone scale starting on D (two octaves)



Augmented arpeggio starting on D (two octaves)



Dominant 7th in the key of D (one octave)*



*If preferred, the dominant 7th may be finished on the starting note rather than resolving onto the tonic.

Diminished 7th starting on D (two octaves)



or ii) **Exercises:**

Candidates to prepare the following:

Lawrence 35. Triple Digit Accidental Twister

Lawrence 39. Summing Up (Again)

Lawrence 40b. Short 'n' Sharp

Exercises for treble clef players (Bb) are contained in the book *Graded Exercises and Studies for Trumpet and Other Valved Brass Instruments* published by Faber Music 0-571-53727-8.

Exercises for bass clef players are contained in *Selected Exercises and Studies for Tuba (Eb)* available to download by grade from www.trinitycollege.co.uk/digital

Grade 7

Candidate to prepare in full *either* Section i) *or* Section ii):

either i) Scales and Arpeggios (from memory):

The following scales and arpeggios to be performed *f* or *p*, tongued or slurred or staccato tongued as requested by the examiner (♩ = 80-126):

E♭ major scale (two octaves)



E♭ major arpeggio (two octaves)



E♭ harmonic minor scale (two octaves)



E♭ melodic minor scale (two octaves)



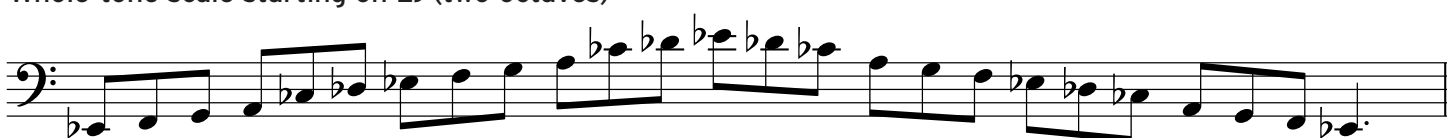
E♭ minor arpeggio (two octaves)



Chromatic scale starting on E♭ (two octaves)

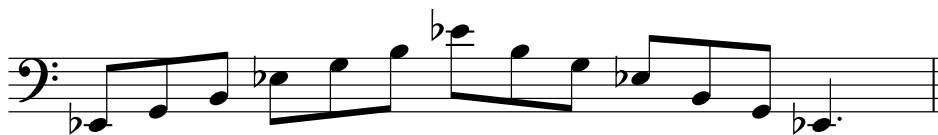


Whole-tone scale starting on E♭ (two octaves)



Grade 7 continued

Augmented arpeggio starting on E \flat (two octaves)



Dominant 7th in the key of E \flat (one octave)*



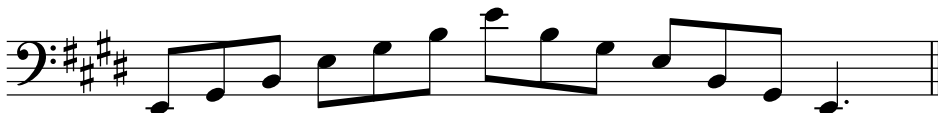
Diminished 7th starting on E \flat (two octaves)



E major scale (two octaves)



E major arpeggio (two octaves)



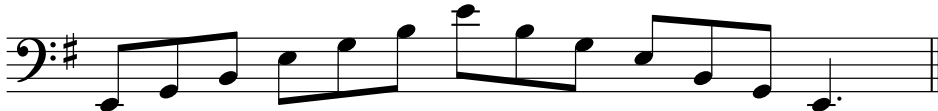
E harmonic minor scale (two octaves)



E melodic minor scale (two octaves)



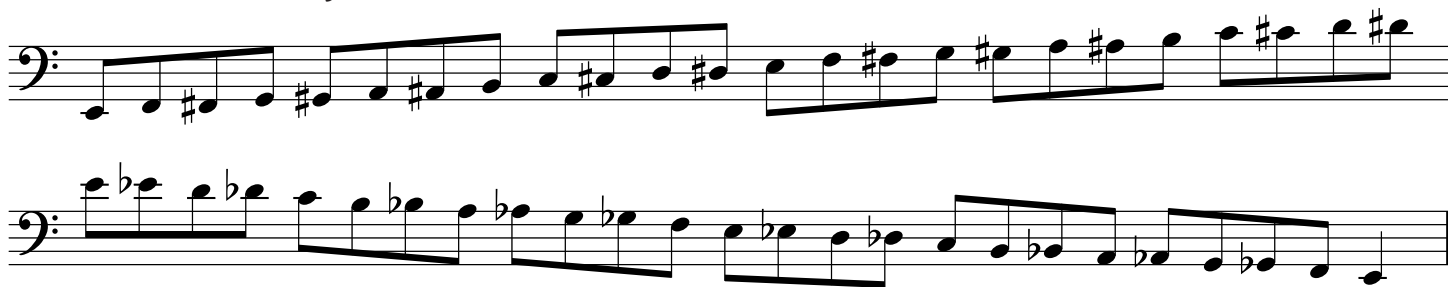
E minor arpeggio (two octaves)



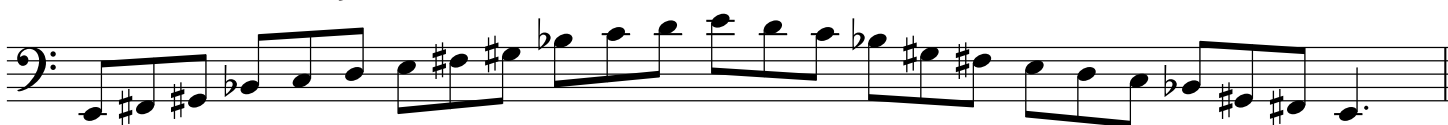
*If preferred, the dominant 7th may be finished on the starting note rather than resolving onto the tonic.

Grade 7 continued

Chromatic scale starting on E (two octaves)



Whole-tone scale starting on E (two octaves)



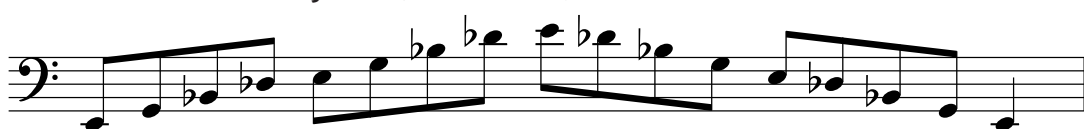
Augmented arpeggio starting on E (two octaves)



Dominant 7th in the key of E (one octave)*



Diminished 7th starting on E (two octaves)



or ii) Exercises:

Candidates to prepare the following:

- Lawrence 23. Chops Factor IV
- Lawrence 49. The Twister!
- Lawrence 57. Back Finger Study

Exercises for treble clef players (Bb) are contained in the book *Graded Exercises and Studies for Trumpet and Other Valved Brass Instruments* published by Faber Music 0-571-53727-8.

Exercises for bass clef players are contained in *Selected Exercises and Studies for Tuba (Eb)* available to download by grade from www.trinitycollege.co.uk/digital

*If preferred, the dominant 7th may be finished on the starting note rather than resolving onto the tonic.

Grade 8

Candidate to prepare in full *either* Section i) *or* Section ii):

either i) Scales and Arpeggios (from memory):

The following scales and arpeggios to be performed *f* or *p*, tongued or slurred or staccato tongued or slurred in pairs (scales only), as requested by the examiner (♩ = 88-132):

F major scale (two octaves)



F major arpeggio (two octaves)



F harmonic minor scale (two octaves)



F melodic minor scale (two octaves)



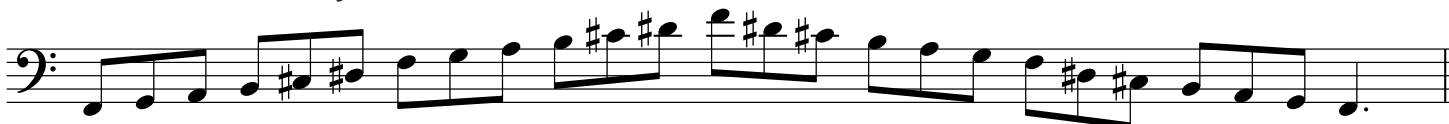
F minor arpeggio (two octaves)



Chromatic scale starting on F (two octaves)

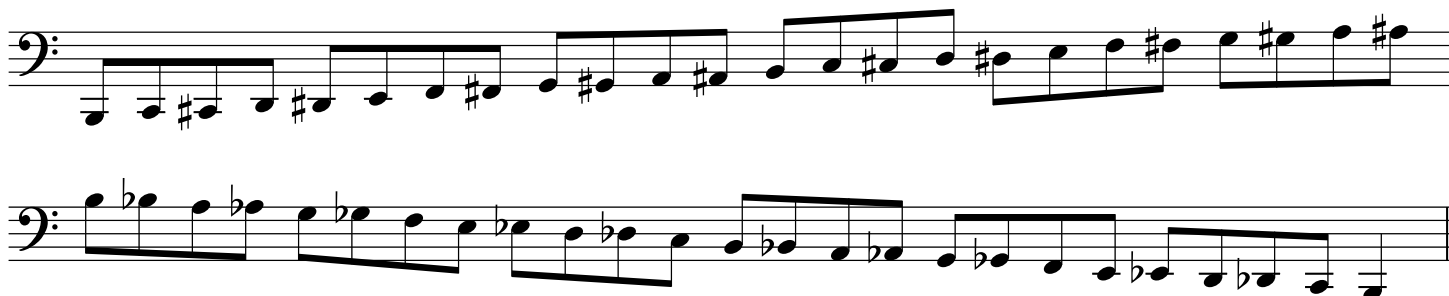


Whole-tone scale starting on F (two octaves)

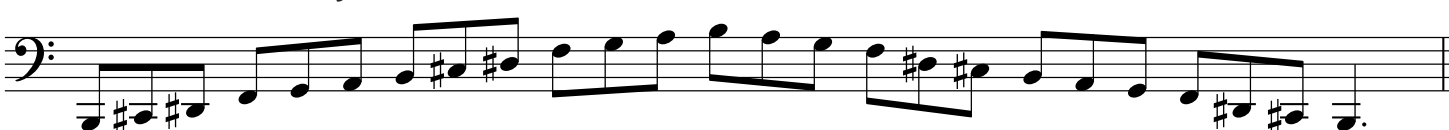


Grade 8 continued

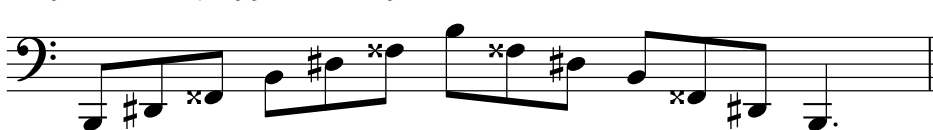
Chromatic scale starting on B (two octaves)



Whole-tone scale starting on B (two octaves)



Augmented arpeggio starting on B (two octaves)



Dominant 7th in the key of B (one octave)*



Diminished 7th starting on B (two octaves)

D \flat major scale (two octaves)D \flat major arpeggio (two octaves)

*If preferred, the dominant 7th may be finished on the starting note rather than resolving onto the tonic.

Grade 8 continued

C# harmonic minor scale (two octaves)



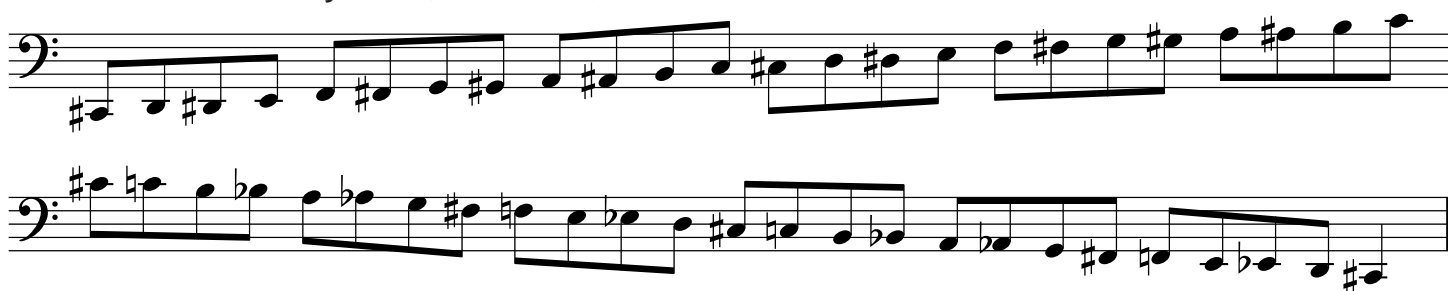
C# melodic minor scale (two octaves)



C# minor arpeggio (two octaves)



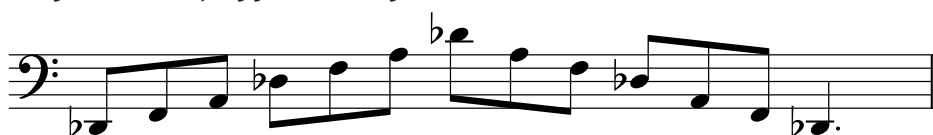
Chromatic scale starting on C# (two octaves)



Whole-tone scale starting on C# (two octaves)



Augmented arpeggio starting on D \flat (two octaves)



Dominant 7th in the key of D \flat (one octave)*



Diminished 7th starting on D \flat (two octaves)



*If preferred, the dominant 7th may be finished on the starting note rather than resolving onto the tonic.

Grade 8 continued

Crabwise scale from F (two octaves - tongued or slurred as indicated)

Crabwise scale from C (two octaves - tongued or slurred as indicated)

or ii) Exercises:

Candidates to prepare the following:

- Lawrence 61. Legato finale
- Lawrence 62. Fingers Finale
- Lawrence 63. Staccatissimo Finale

Exercises for treble clef players (Bb) are contained in the book *Graded Exercises and Studies for Trumpet and Other Valved Brass Instruments* published by Faber Music 0-571-53727-8.

Exercises for bass clef players are contained in *Selected Exercises and Studies for Tuba (Eb)* available to download by grade from www.trinitycollege.co.uk/digital