

Grade 4 theory model answer paper

for May 2013



Introduction and notes

This answer paper has been created to demonstrate the correct answers, or those which would attract the highest marks. Where it is possible to give an exact answer, this has been done. Where there are multiple correct answers, these may also be given. Where an answer is open ended and/or creative, then an indicative answer has been given to show the type of response that is expected.

Trinity College London reserves the right to alter the content of this publication at any time.

All syllabuses and further information about Trinity College London can be obtained from:

Trinity College London
89 Albert Embankment
London SE17TP UK

T +44 (0)20 7820 6100
F +44 (0)20 7820 6161
E music@trinitycollege.co.uk
www.trinitycollege.co.uk

© Trinity College London 2013

Theory of Music Grade 4

May 2013

Your full name (as on appointment slip). Please use BLOCK CAPITALS.

Your signature

Registration number

Centre

Instructions to Candidates

1. The time allowed for answering this paper is **two (2) hours**.
2. Fill in your name and the registration number printed on your appointment slip in the appropriate spaces on this paper, and on any other sheets that you use.
3. **Do not open this paper until you are told to do so.**
4. This paper contains **seven (7) sections** and you should answer all of them.
5. Read each question carefully before answering it. Your answers must be written legibly in the spaces provided.
6. You are reminded that you are bound by the regulations for written examinations displayed at the examination centre and listed on page 4 of the current edition of the written examinations syllabus. In particular, you are reminded that you are not allowed to bring books, music or papers into the examination room. Bags must be left at the back of the room under the supervision of the invigilator.
7. If you leave the examination room you will not be allowed to return.

Examiner's use only:

1 (10)	
2 (15)	
3 (10)	
4 (15)	
5 (15)	
6 (15)	
7 (20)	
Total	

Section 1 (10 marks)

Boxes for
examiner's
use only

Put a tick (✓) in the box next to the correct answer.

Example

Name this note:



A D C

This shows that you think C is the correct answer.

1.1 Name the circled note:



C# D E

1.2 Which is the correct grouping of main beats in this bar?



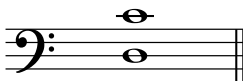
2, 2, 1 4, 2 3, 2

1.3 Which is the correct time signature?



$\frac{4}{4}$ $\frac{6}{8}$ $\frac{9}{8}$

1.4 Name this interval:



major 6th minor 7th major 7th

1.5 Which note is the enharmonic equivalent of this note?



F F# Gb

Put a tick (✓) in the box next to the correct answer.

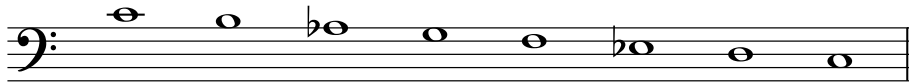
Boxes for
examiner's
use only

1.6 Which note is the dominant in the minor key shown in this key signature?



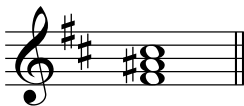
D Eb C

1.7 The correct label for the following scale is:



C melodic minor scale descending
 C harmonic minor scale descending
 C natural minor scale descending

1.8 Which note will you add to make a dominant 7th chord in the key of B minor?

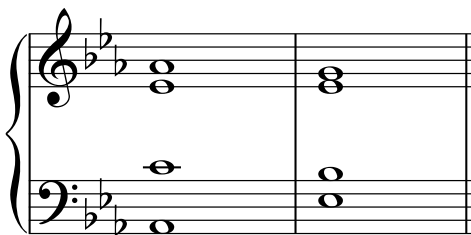


B D E

1.9 *pesante* means:

smoothly heavily softly

1.10 Name this cadence:



plagal cadence in Eb major
 perfect cadence in Eb major
 plagal cadence in C minor

Please turn over for Section 2

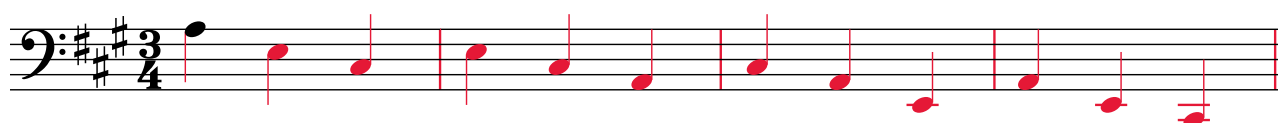
Section 2 (15 marks)

Boxes for
examiner's
use only

2.1 Write a one-octave F# melodic minor scale in minims, going up then down. Do not use a key signature but write in any necessary accidentals.

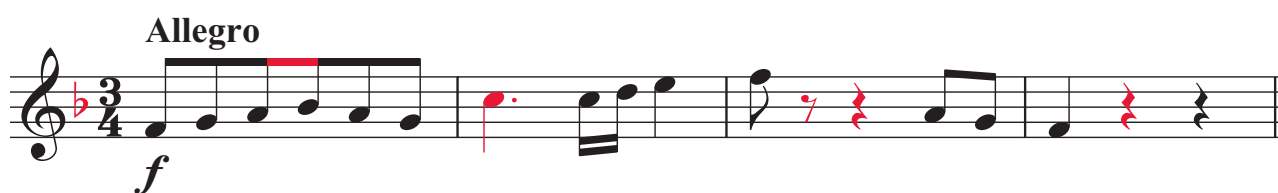


2.2 Using crotchets, write a broken chord using A major tonic triad (going down). Use patterns of three notes each time. Finish on the first C# below the staff.



Section 3 (10 marks)

3.1 Circle five different mistakes in the following music, then write it out correctly.



Section 4 (15 marks)

Boxes for
examiner's
use only

4.1 Transpose this tune down a perfect 4th. Use a key signature.

Beethoven



Section 5 (15 marks)

5.1 Using crotchets, write out 4-part chords for SATB using the chords shown by the Roman numerals. Double the root in each case and make sure that each chord is in root position.

(D minor) V

(Bb major) IV



Section 6 (15 marks)

6.1 Use notes from the chords shown by the chord symbols to write a tune above the bass line. Add some unaccented passing notes, once you have the main harmony notes in place.



Section 7 (20 marks)

Look at the following piece and answer the questions opposite.

Vivo J. W. Hässler

4 V⁷ I

9

13

- 7.1 In which key is this piece? G major
- 7.2 In how many sections is this piece? 2
- 7.3 Is the sequence starting at the end of bar 8 a real sequence (treble part)? No
- 7.4 Write appropriate Roman numerals below the last chord in bar 7 and the first chord in bar 8.
- 7.5 What cadence is formed by these two chords? Perfect
- 7.6 Name the interval between the two notes marked with asterisks (*) in bar 9 (treble part).
Minor 3rd
- 7.7 Circle a note which is an unaccented passing note in bar 5.
- 7.8 This piece begins on an up-beat. What is the musical term for this? Anacrusis
- 7.9 Name a woodwind instrument that could play the treble part of this piece. Flute (clarinet or oboe)
- 7.10 What does **Vivo** mean? Lively

Boxes for
examiner's
use only