

# Past papers

for graded exams  
in music theory

November 2013

## Grade 8

# Theory of Music Grade 8

November 2013

**TRINITY**  
COLLEGE LONDON

Your full name (as on appointment slip). Please use BLOCK CAPITALS.

\_\_\_\_\_

Your signature

Registration number

\_\_\_\_\_

\_\_\_\_\_

Centre

\_\_\_\_\_

## Instructions to Candidates

1. The time allowed for answering this paper is **three (3) hours**.
2. Fill in your name and the registration number printed on your appointment slip in the appropriate spaces on this paper, and on any other sheets that you use.
3. **Do not open this paper until you are told to do so.**
4. This paper contains **five (5) sections** and you should answer all of them.
5. Read each question carefully before answering it. Your answers must be written legibly in the spaces provided.
6. You are reminded that you are bound by the regulations for written examinations displayed at the examination centre and listed on page 4 of the current edition of the written examinations syllabus. In particular, you are reminded that you are not allowed to bring books, music or papers into the examination room. Bags must be left at the back of the room under the supervision of the invigilator.
7. If you leave the examination room you will not be allowed to return.

Examiner's use only:

1 (30)	
2 (15)	
3 (15)	
4 (20)	
5 (20)	
Total	

**Section 1** (30 marks)Boxes for  
examiner's  
use only

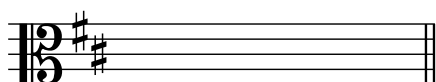
1.1 What is formed by the following note progression? \_\_\_\_\_



1.2 Name two Romantic composers of concertos. \_\_\_\_\_

\_\_\_\_\_

1.3 On the stave below, write the French sixth chord in the key of B minor.



1.4 What is another name for the tamburo piccolo? \_\_\_\_\_

1.5 Alter two of these notes to make the dominant seventh of E major: B D F A.

\_\_\_\_\_

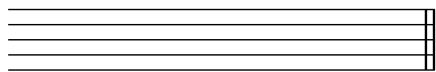
1.6 Write the appropriate chord symbol above the following chord:



1.7 Name a composer of nocturnes. \_\_\_\_\_

1.8 What is the relative minor key of C# major? \_\_\_\_\_

- 1.9 On the staff below write the lowest written note playable by a Cornet in B $\flat$ .


☐

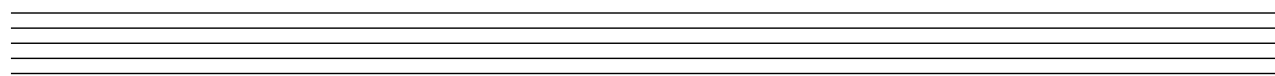
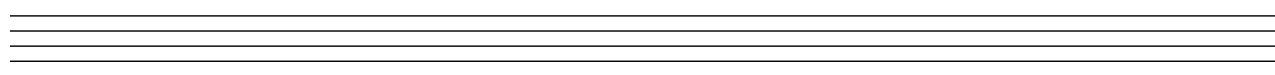
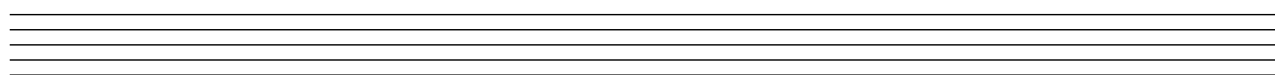
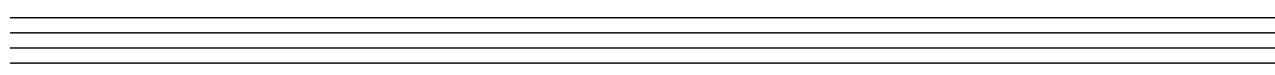
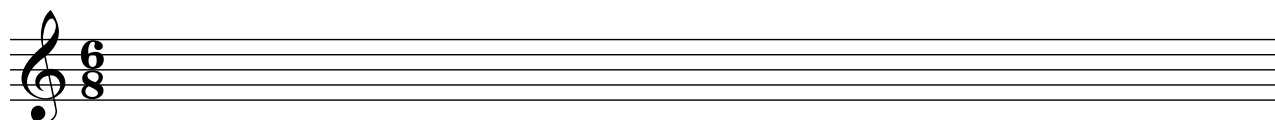
- 1.10 Name the woodwind instrument which sounds a perfect fifth lower than written.

\_\_\_\_\_

☐

## Section 2 (15 marks)

- 2.1 Write, at sounding pitch, a 16-bar melody in the Aeolian mode on D for French horn. You may use the following as a start if you wish:


☐

## Section 3 (15 marks)

Boxes for  
examiner's  
use only

3.1 Write out the following extract as it will sound.

Liadov

Clar. in B $\flat$

Cor. in F

Tr. in B $\flat$

Trbn.

**Section 4** (20 marks)Boxes for  
examiner's  
use only

4.1 Harmonise the following phrases in an appropriate style, modulating as necessary.

Neander

Musical notation for a melody in 4/4 time, key of B-flat major. The melody is written on a single staff with a treble clef. It consists of four measures. The first measure contains a quarter note B-flat, a quarter note A, a quarter note G, and a quarter note F. The second measure contains a quarter note E, a quarter note D, a quarter note C, and a half note B-flat. The third measure contains a quarter note A, a quarter note G, a quarter note F, and a quarter note E. The fourth measure contains a quarter note D, a quarter note C, a quarter note B-flat, and a half note A. The melody is labeled 'Neander'.

*please turn over for section 5*

**Section 5** (20 marks)

Look at the music below and answer the questions which follow.

George Berg

**Jigg**

The musical score for 'Jigg' by George Berg is written in 12/8 time and consists of five systems of music. The key signature has two flats (B-flat and E-flat). The score includes piano (p) markings and trill (tr) ornaments. The first system shows the beginning of the piece with a piano introduction in the bass. The second system starts at measure 4. The third system starts at measure 7. The fourth system starts at measure 10. The fifth system starts at measure 13 and ends with a double bar line. The music features a mix of eighth and sixteenth notes, with trills used as decorative elements.

5.1 'Jigg' means 'Gigue'. Mention two features of the Gigue which are present in this music.

\_\_\_\_\_

5.2 What key is reached in bar 9? \_\_\_\_\_

5.3 Give the numbers of two bars which contain a suspension. \_\_\_\_\_

5.4 What type of cadence occurs in bar 8? \_\_\_\_\_

5.5 What key is reached in bar 12? \_\_\_\_\_

5.6 Write the appropriate figuring beneath the second beat of bar 12.

5.7 In what form is this music written? \_\_\_\_\_

5.8 Mention two features which support the answer you have given to question 5.7.

\_\_\_\_\_

5.9 Which note in the top stave of bar 3 is an auxiliary note? \_\_\_\_\_

5.10 On the music mark with square brackets (┌┐) both pairs of bars which together make a four-bar sequence.

Boxes for  
examiner's  
use only

☐
☐
☐
☐
☐
☐
☐
☐
☐
☐