

Past papers

for graded exams
in music theory

November 2013

Grade 7

Theory of Music Grade 7

November 2013

Your full name (as on appointment slip). Please use BLOCK CAPITALS.

Your signature

Registration number

Centre

Instructions to Candidates

1. The time allowed for answering this paper is **three (3) hours**.
2. Fill in your name and the registration number printed on your appointment slip in the appropriate spaces on this paper, and on any other sheets that you use.
3. **Do not open this paper until you are told to do so.**
4. This paper contains **seven (7) sections** and you should answer all of them.
5. Read each question carefully before answering it. Your answers must be written legibly in the spaces provided.
6. You are reminded that you are bound by the regulations for written examinations displayed at the examination centre and listed on page 4 of the current edition of the written examinations syllabus. In particular, you are reminded that you are not allowed to bring books, music or papers into the examination room. Bags must be left at the back of the room under the supervision of the invigilator.
7. If you leave the examination room you will not be allowed to return.

Examiner's use only:

1 (20)	
2 (10)	
3 (15)	
4 (10)	
5 (10)	
6 (15)	
7 (20)	
Total	

Section 1 (20 marks)Boxes for
examiner's
use only

1.1 Give another name for the Aeolian mode. _____

☐1.2 What does *poco più tranquillo* mean? _____☐

1.3 Which note is the supertonic of G# minor? _____

☐

1.4 Write the chord symbol to show an augmented chord on D in first inversion. _____

☐

1.5 Which of the following statements is true, a], b], or c]? _____

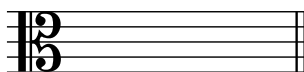
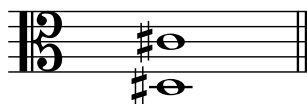
☐

a] The Dorian mode contains no semitones.

b] The treble recorder sounds an octave lower than written.

c] Figured bass was used extensively in the nineteenth century.

1.6 Write one of these notes enharmonically so that the resultant interval is an augmented sixth.

☐

1.7 What is a scherzo? _____

☐

1.8 Write the appropriate Roman numeral below the following chord.



(F minor)

☐

1.9 Name two Classical composers of string quartets. _____

☐

1.10 What is meant by modulation? _____

☐

Section 2 (10 marks)

Boxes for
examiner's
use only

- 2.1 Transpose this 12-bar blues chord progression into $A\flat$ major with Roman numerals below the staff and chord symbols above. Then fill in the keyboard part with block chords on each crotchet beat. Use shorthand where appropriate.

Chord progression in F major (12 bars):

- Bar 1: F (I)
- Bar 2: F (I)
- Bar 3: F (I)
- Bar 4: F (I)
- Bar 5: $B\flat$ (IV)
- Bar 6: $B\flat$ (IV)
- Bar 7: F (I)
- Bar 8: F (I)
- Bar 9: C (V)
- Bar 10: $B\flat$ (IV)
- Bar 11: F (I)
- Bar 12: C (V)

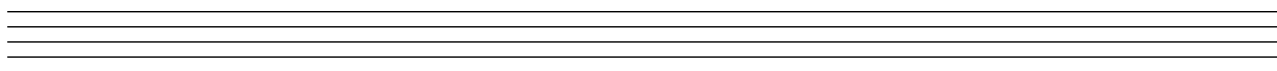
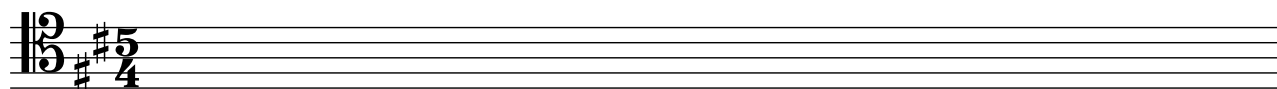


Section 3 (15 marks)

Boxes for
examiner's
use only

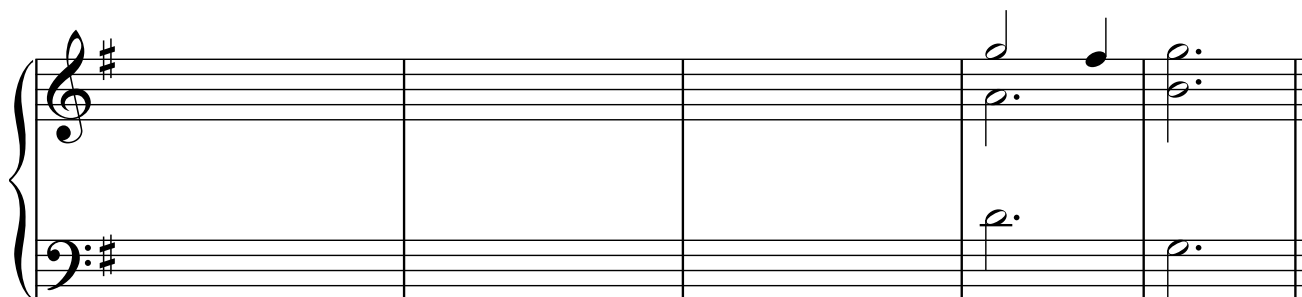
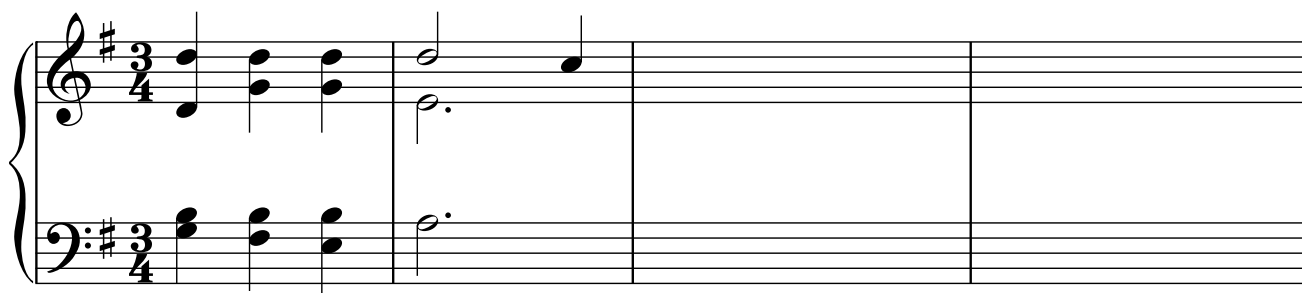
3.1 Write an 8-bar melody in B minor for trombone. You may use the following as a start if you wish:

Risoluta



Section 4 (10 marks)


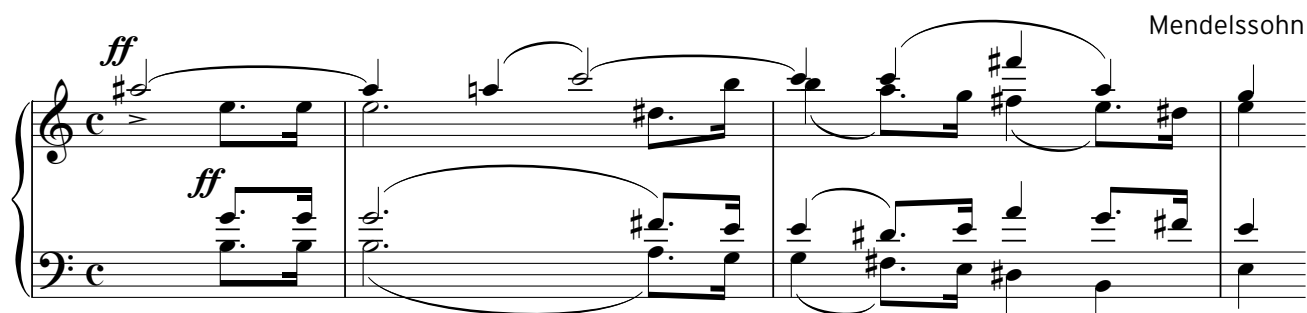
4.1 Make a harmonic sequence by repeating it one note higher each time to complete the phrase.



Section 5 (10 marks)Boxes for
examiner's
use only

5.1 Transfer this passage for string quartet to open score.

ff *ff* Mendelssohn

*please turn over for section 6*

Section 6 (15 marks)

Boxes for
examiner's
use only

- 6.1 Label the chords of this phrase with Roman numerals below the stave and chord symbols above, and complete it with an appropriate cadence.

Kirchengesäng, 1566



Section 7 (20 marks)

Look at the extract below and answer the questions on page 9.

Mozart

Allegro

Fagotto

Violoncello

5

9

13

17

21

24

Measures 24-26 of a musical score. Measure 24 features a treble staff with a descending eighth-note scale and a bass staff with a half note. Measure 25 continues the treble staff's scale and the bass staff's half note. Measure 26 shows a treble staff with a trill on a half note and a bass staff with a quarter-note scale.

27

Measures 27-30 of a musical score. Measure 27 has a treble staff with a sixteenth-note scale and a bass staff with a half note. Measure 28 continues the treble staff's scale and the bass staff's half note. Measure 29 shows a treble staff with a half note and a bass staff with a quarter-note scale. Measure 30 features a treble staff with a half note and a bass staff with a quarter-note scale.

31

Measures 31-34 of a musical score. Measure 31 has a treble staff with a half note and a bass staff with a quarter-note scale. Measure 32 continues the treble staff's half note and the bass staff's quarter-note scale. Measure 33 shows a treble staff with a half note and a bass staff with a quarter-note scale. Measure 34 features a treble staff with a half note and a bass staff with a quarter-note scale.

35

Measures 35-37 of a musical score. Measure 35 has a treble staff with a half note and a bass staff with a quarter-note scale. Measure 36 continues the treble staff's half note and the bass staff's quarter-note scale. Measure 37 shows a treble staff with a half note and a bass staff with a quarter-note scale.

38

Measures 38-40 of a musical score. Measure 38 has a treble staff with a sixteenth-note scale and a bass staff with a half note. Measure 39 continues the treble staff's scale and the bass staff's half note. Measure 40 shows a treble staff with a trill on a half note and a bass staff with a quarter-note scale.

7.1 What type of inverted cadence occurs on the first two beats of bar 4? _____

Boxes for
examiner's
use only

☐

7.2 Explain the function (e.g. appoggiatura) of the first B \flat in the upper stave of bar 6.

☐

7.3 Draw a circle around the appoggiatura in bar 8.

☐

7.4 What key is reached in bar 18? _____

☐

7.5 What device is seen in bars 18 and 19? _____

☐

7.6 What is the appropriate chord symbol for the chord used on the third and fourth beats of bar 26? _____

☐

7.7 What is the interval between the last two quavers in the upper stave of bar 39?

☐

7.8 Draw a circle around a chromatic auxiliary note in bar 33.

☐

7.9 What is a fagotto? _____

☐

7.10 What type of ornament occurs in bar 9? _____

☐