

Theory of Music Grade 3

November 2010

TRINITY
GUILDHALL

Your full name (as on appointment slip). Please use BLOCK CAPITALS.

Your signature

Registration number

Centre

Instructions to Candidates

1. The time allowed for answering this paper is **two (2) hours**.
2. Fill in your name and the registration number printed on your appointment slip in the appropriate spaces on this paper, and on any other sheets that you use.
3. **Do not open this paper until you are told to do so.**
4. This paper contains **seven (7) sections** and you should answer all of them.
5. Read each question carefully before answering it. Your answers must be written legibly in the spaces provided.
6. You are reminded that you are bound by the regulations for written examinations displayed at the examination centre and listed on page 4 of the current edition of the written examinations syllabus. In particular, you are reminded that you are not allowed to bring books, music or papers into the examination room. Bags must be left at the back of the room under the supervision of the invigilator.
7. If you leave the examination room you will not be allowed to return.

Examiner's use only:

1	
2	
3	
4	
5	
6	
7	
Total	

Section 1 (10 marks)

Put a tick (✓) in the box next to the correct answer.

Example

Name this note:



A ☐ D ☐ C ☒

This shows that you think C is the correct answer.

1.1 Name the circled note:



E ☐ G ☐ F ☐

☐

1.2 Add the total number of dotted crotchet beats in these tied notes.



6 ☐ 9 ☐ 5 ☐

☐

1.3 Which is the main beat in $\frac{3}{2}$ time?

crotchet ☐ minim ☐ dotted crotchet ☐

☐

1.4 Which is the correct time signature?



$\frac{9}{8}$ ☐ $\frac{3}{4}$ ☐ $\frac{6}{8}$ ☐

☐

1.5 The relative major of B minor is :

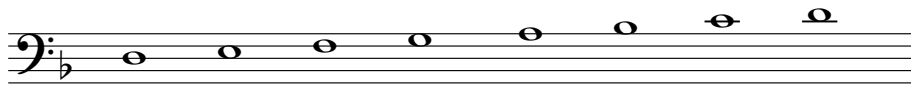
C major ☐ G major ☐ D major ☐

☐

Boxes for
examiner's
use only

Put a tick (✓) in the box next to the correct answer.

- 1.6 Here is the scale of D natural minor. Which degree(s) of the scale will you change to make the scale of D melodic minor?

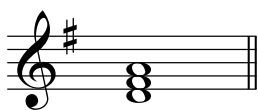


- none ☐
 6th and 7th degrees ☐
 7th degree ☐

Boxes for
examiner's
use only

☐

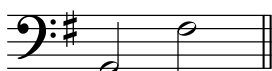
- 1.7 Which symbol does **not** fit with this dominant triad?



- D ☐ V ☐ I ☐

☐

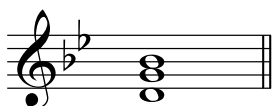
- 1.8 Name this interval:



- Major 7th ☐ Minor 7th ☐ Major 6th ☐

☐

- 1.9 Name this triad:



- Tonic triad of Bb major in 2nd inversion ☐
 Tonic triad of G minor in root position ☐
 Tonic triad of G minor in 2nd inversion ☐

☐

- 1.10 What does **al** mean?

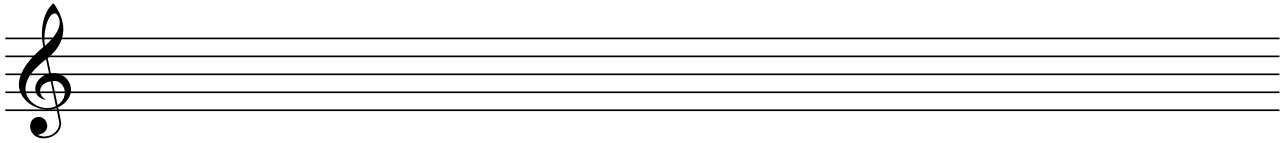
- but ☐ like ☐ more ☐

☐

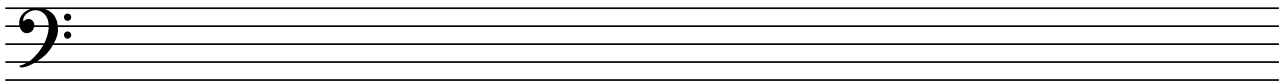
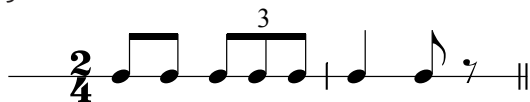
Section 2 (15 marks)

Boxes for
examiner's
use only

- 2.1 Write a one-octave G melodic minor scale in minims going up then down. Use a key signature.


☐

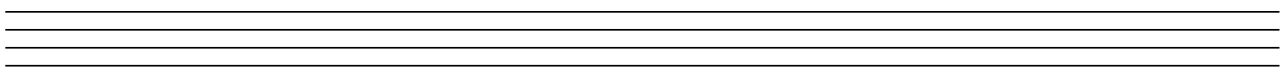
- 2.2 Write the key signature for the key shown. Then write its one-octave arpeggio in the rhythm given below.


☐

B minor going down then up

Section 3 (10 marks)

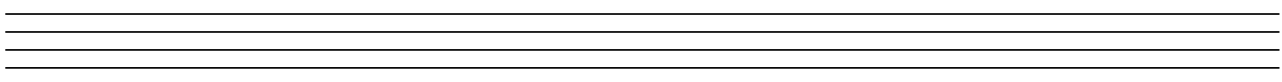
- 3.1 Circle five different mistakes in the following music, then write it out correctly.


☐

Section 4 (15 marks)

- 4.1 Transpose this tune up an octave into the treble clef to make it suitable for a violin to play.

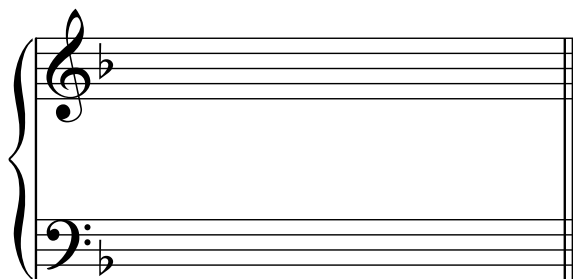
Traditional (English)


☐

Section 5 (15 marks)

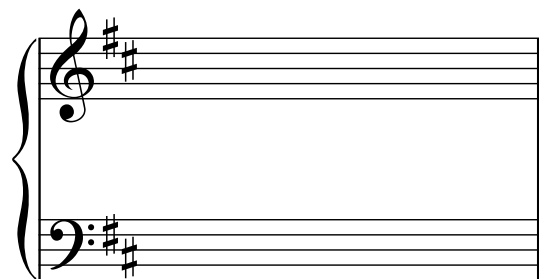
Boxes for
examiner's
use only

- 5.1 Using minims, write out 4-part chords for SATB using the chords shown by the Roman numerals. Double the root in each case and make sure that each chord is in root position.



(F major)

I



(B minor)

i



Section 6 (15 marks)

- 6.1 Use notes from the tonic or dominant triads shown by the chord symbols to write a tune above the bass line.

Gm D D Gm

 A musical staff with a treble clef and a key signature of two flats (B-flat major/D minor). The staff is divided into four measures. The first measure contains a Gm chord symbol and a bass line starting with a G note. The second measure contains a D chord symbol and a bass line starting with a D note. The third measure contains a D chord symbol and a bass line starting with a D note. The fourth measure contains a Gm chord symbol and a bass line starting with a G note. The treble clef staff is empty for writing a tune.


Please turn over for Section 7

Section 7 (20 marks)

Look at the following piece and answer the questions opposite.

1 **Adagio** Spiritual

p

5 **poco rit.** Fine

p

9 **a tempo**

mf *cresc.*

13 **Da Capo al Fine**

f *mp* *p*

Boxes for
examiner's
use only

7.1 In which key is this piece? _____

☐

7.2 There are eight phrases in this piece. On which chord does the seventh (7th) phrase finish in bar 13?

☐

7.3 What is the musical word that describes the  rhythm in bar 9? _____

☐

7.4 Name the cadence at the end of the piece. _____

☐

7.5 Name the interval between the two notes marked with asterisks (*) in bars 3 and 4. _____

☐

7.6 What does **Da Capo al Fine** mean? _____

☐

7.7 In which bars should a musician slow down a little? _____

☐

7.8 Which phrases start on an upbeat? _____

☐

7.9 What does **Adagio** mean? _____

☐

7.10 Put a bracket (┌─┐) above two bars where the treble and bass parts play in octaves, in similar motion.

☐

