

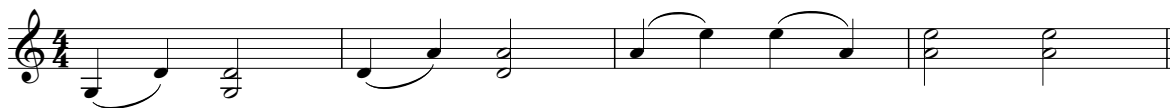
Strings Syllabus 2016-2019

Bowed strings technical work exercises

The following pages contain notated examples of all the exercises required as part of technical work option ii) for all bowed strings Grades 1-8, excluding Double Bass Grades 1 and 2. All technical work exercises are to be performed from memory.

Violin

Grade 1 – Open strings:



Grade 2 – Octaves and sixths:



Grade 3

a) Chromatic phrase to be played with separate bows, starting on the D string:



b) Octaves, sixths and thirds:



Grade 4

a) Octaves:

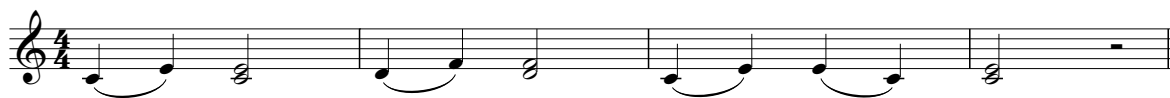


b) D major phrase:



Grade 5

a) C major in thirds:



b) Bb major in sixths:



c) D major scale on one string:



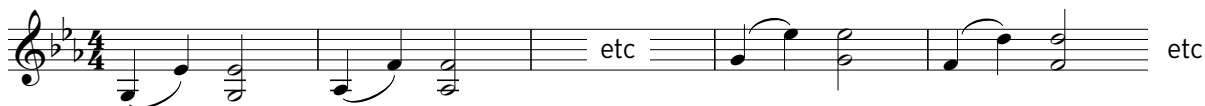
Strings Syllabus continued

Grade 6

a) D major in thirds:



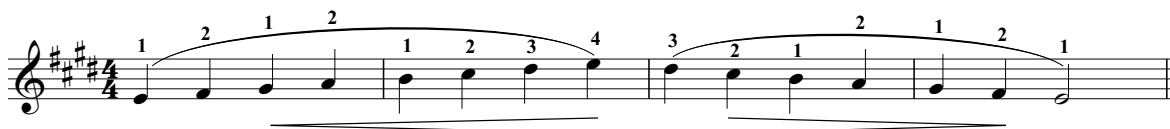
b) E♭ major in sixths:



c) D major in octaves:



d) E major scale on one string:



Grade 7

a) B♭ major in thirds (one octave):



b) B♭ major in sixths (one octave):



c) D major in octaves (one octave):



Grade 8

a) B♭ major in thirds (two octaves):



b) G major in sixths (two octaves):



c) D major in octaves (one octave):



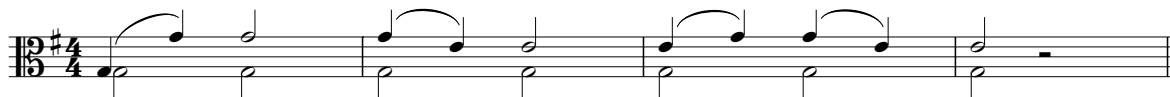
Strings Syllabus continued

Viola

Grade 1 – Open strings:



Grade 2 – Octaves and sixths:



Grade 3

a) Chromatic phrase to be played with separate bows, starting on the G string:

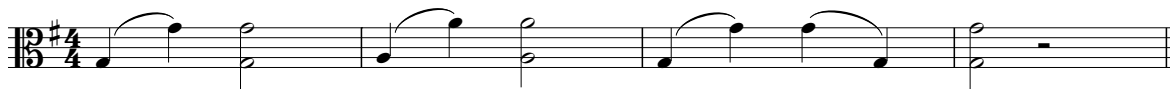


b) Octaves, sixths and thirds:



Grade 4

a) Octaves:



b) G major phrase:



Grade 5

a) F major in thirds:



b) Eb major in sixths:



c) G major scale on one string:





Strings Syllabus continued

Cello

Grade 1 – Open strings:



Grade 2 – Fifths and sixths, starting on G, D and C strings:



Grade 3

a) Chromatic phrase to be performed with separate bows [$\text{♩} = 60$]:



b) Fifths, sixths and octaves, starting on the open G, D and C strings [$\text{♩} = 76$]:



Grade 4 – Octaves and sixths, starting on the open G, D and C strings:



Grade 5 – Octaves, sixths and thirds, starting on the open G, D and C strings:



Grade 6 – Sixths in C major:



Grade 7

a) C major in sixths (one octave):



b) B♭ major in thirds (one octave):



a) E \flat major in thirds (one octave):

b) C major in sixths (one octave):

etc

For Initial–Grade 2 no technical exercises, only scales and arpeggios are required for section ii).

The bass line for "The Rose Tree" is written in 4/4 time. It consists of two staves. The first staff contains four measures of music: the first measure has a quarter note G2 and a quarter note A2; the second measure has a quarter note B1 and a quarter note C2; the third measure has a quarter note D2 and a quarter note E2; the fourth measure has a quarter note F2 and a quarter note G2. The second staff contains four measures: the first measure has a quarter note A2 and a quarter note B1; the second measure has a quarter note C2 and a quarter note D2; the third measure has a quarter note E2 and a quarter note F2; the fourth measure has a whole rest.

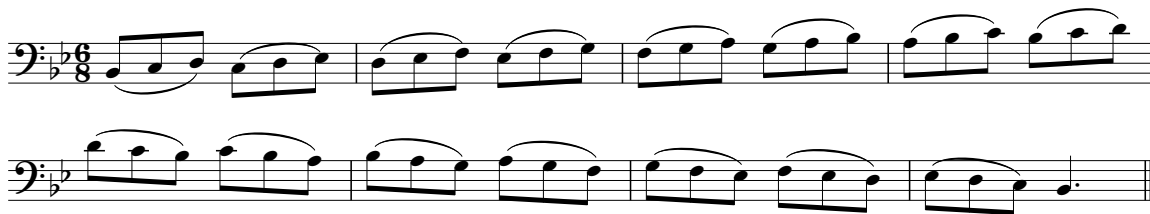
The bass line is written on a single staff in bass clef with a key signature of one sharp (F#). It consists of two measures. The first measure contains a half note G2, a half note A2, and a half note B2, all beamed together. The second measure contains a half note C3, a half note D3, and a half note E3, all beamed together. The staff ends with a double bar line.

etc

etc

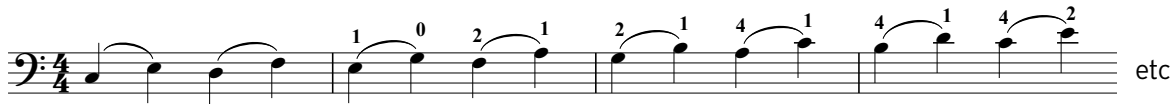
Strings Syllabus continued

b) Running thirds in B \flat major [♩ = 60]:



Grade 8

a) Broken thirds in C major (one octave) [♩ = 76]:



b) Broken thirds in F major (two octaves) [♩ = 76]:



c) Running thirds in G major on the G string (one octave): see Grade 7 example [♩ = 60]