

Bass Trombone

Scales, Arpeggios & Exercises

for Trinity College London
Bass Trombone exams from 2015

Grades 6-8

Published by:
Trinity College London
www.trinitycollege.com
Copyright © 2014 Trinity College London
Online edition, August 2014

Unauthorised photocopying is illegal
No part of this publication may be copied or reproduced in any
form or by any means without the prior permission of the publisher.

Grade 6

Candidates to prepare i) Lip flexibility exercise and chromatic scale

Lip flexibility exercise (from memory)

Play the exercise slurred, using the slide combinations given.

Chromatic scale starting on low E \flat (two octaves, from memory) (tempo, dynamics and articulation as for scales below)

Candidates to prepare in full *either* section ii) *or* section iii)

either ii) **Scales & arpeggios** (from memory) – the examiner will select from the following:

Candidates should prepare scales and arpeggios from the following tonal centres:

Low E \flat major, low E \flat minor

D major, D minor

Plus:

Whole-tone scale starting on D

Dominant 7th in the key of Ab

Diminished 7th starting on Eb

Augmented arpeggio starting on E \flat

using plug
range Eb, D

two
octaves

♩ = 72-120

tongued,
legato-tongued
or staccato-
tongued as
requested by
the examiner

f or *p*

When the examiner requests a **major tonal centre**, the candidate should play in succession:

The major scale

The major arpeggio

When the examiner requests a **minor tonal centre**, the candidate should play in succession:

The melodic minor scale

The harmonic minor scale

The minor arpeggio

or **iii) Orchestral & brass band extracts**

See current syllabus for details

i) Lip flexibility exercise and chromatic scale

slide 1

♩ = 144

play three times

The image shows a musical staff in bass clef with a common time signature 'C'. The tempo is marked as ♩ = 144. The notation includes a series of notes with a slur over them, and a 'play three times' instruction. The staff ends with a double bar line and a repeat sign.

Repeat (descending) using the following slide positions:

3rd - 5th - 6th

Chromatic scale starting on E \flat (two octaves)

[illegible]

Grade 6 continued

ii) Scales & arpeggios

D major scale (two octaves)



D major arpeggio (two octaves)



D harmonic minor scale (two octaves)



D melodic minor scale (two octaves)



D minor arpeggio (two octaves)



Whole-tone scale starting on D (two octaves)



Eb major scale (two octaves)



Grade 6 continued

E \flat major arpeggio (two octaves)



E \flat harmonic minor scale (two octaves)



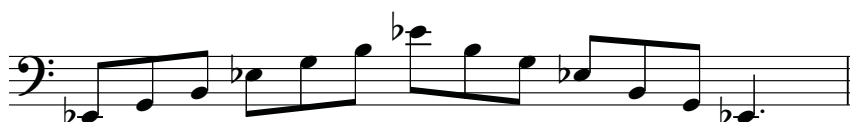
E \flat melodic minor scale (two octaves)



E \flat minor arpeggio (two octaves)



Augmented arpeggio starting on E \flat (two octaves)



Diminished 7th starting on E \flat (two octaves)



Dominant 7th in the key of A \flat (two octaves)



Grade 7

Candidates to prepare i) Lip flexibility exercise and chromatic scale

Lip flexibility exercise (from memory)

Play the exercise slurred, using the slide positions given.

Chromatic scale starting on low C (two octaves, from memory) (tempo, dynamics and articulation as for scales below)

Candidates to prepare in full *either* section ii) *or* section iii)

either ii) **Scales & arpeggios** (from memory) – the examiner will select from the following:

Candidates should prepare scales and arpeggios from the following tonal centres:

Low C major, low C minor
Low D \flat major, low C \sharp minor

Plus:

Chromatic scale starting on low C \sharp
Whole-tone scale starting on low C and low C \sharp
Dominant 7th in the keys of F and F \sharp
Diminished 7th starting on low C and low C \sharp
Augmented arpeggio starting on low C and low C \sharp

using
plug
range
C \sharp , C

two
octaves

$\text{♩} = 80-126$

tongued,
legato-tongued
or staccato-
tongued as
requested by
the examiner

f or *mf*
or *p* or
cresc./dim.
(*p-f-p*)
or
dim./cresc.
(*f-p-f*)

When the examiner requests a **major tonal centre**, the candidate should play in succession:

The major scale
The major arpeggio

When the examiner requests a **minor tonal centre**, the candidate should play in succession:

The melodic minor scale
The harmonic minor scale
The minor arpeggio

or iii) **Orchestral & brass band extracts**

See current syllabus for details

i) Lip flexibility exercise and chromatic scale

$\text{♩} = 86$

slide 1

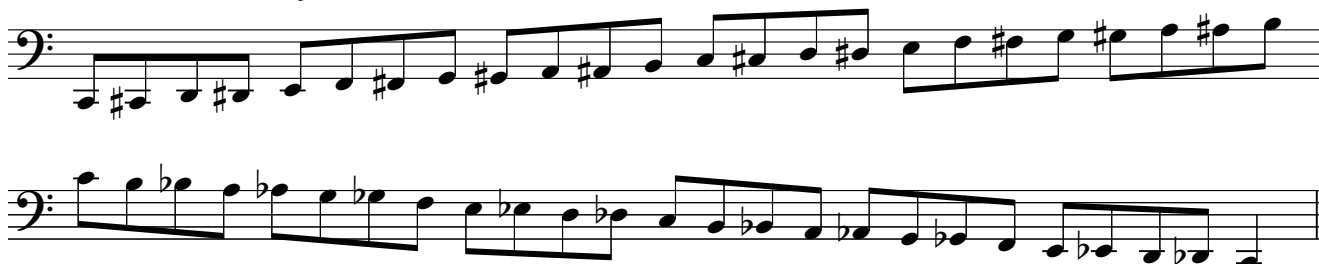
Repeat (descending) using the following slide combinations:

2nd – 3rd* – 4th*

*Candidates may play an octave higher on these pedals

Grade 7 continued

Chromatic scale starting on C (two octaves)



ii) Scales & arpeggios

C major scale (two octaves)



C major arpeggio (two octaves)



C harmonic minor scale (two octaves)



C melodic minor scale (two octaves)



C minor arpeggio (two octaves)



Grade 7 continued

Whole-tone scale starting on C (two octaves)



Augmented arpeggio starting on C (two octaves)



Diminished 7th starting on C (two octaves)



D \flat major scale (two octaves)



D \flat major arpeggio (two octaves)



C \sharp harmonic minor scale (two octaves)



C \sharp melodic minor scale (two octaves)



Grade 7 continued

C# minor arpeggio (two octaves)



Chromatic scale starting on C# (two octaves)



Whole-tone scale starting on C# (two octaves)



Augmented arpeggio starting on C# (two octaves)



Diminished 7th starting on C# (two octaves)



Dominant 7th in the key of F (two octaves)



Dominant 7th in the key of F# (two octaves)



Grade 8

Candidates to prepare i) Lip flexibility exercise and chromatic scale

Lip flexibility exercise (from memory)

Play the exercise slurred, using the slide positions given.

Chromatic scale starting on pedal B (two octaves, from memory) (tempo, dynamics and articulation as for scales below)

Candidates to prepare in full *either* section ii) *or* section iii)

either ii) **Scales & arpeggios** (from memory) – the examiner will select from the following:

Candidates should prepare scales and arpeggios from the following tonal centres:

Low B major, low B minor
Low B \flat major, low B \flat minor

Plus:

Crabwise scale from F and pedal B \flat
Chromatic scale starting on low B \flat and low D
Whole-tone scale starting on low B and low B \flat
Dominant 7th in the keys of E and E \flat
Diminished 7th starting on low B and low B \flat
Augmented arpeggio starting on low B and low B \flat

using
plug
range B,
ped B \flat

two
octaves

$\text{♩} = 88-132$

tongued,
slurred-
tongued or
staccato-
tongued as
requested by
the examiner

***f** or **mf**
or **p** or
cresc./dim.
(**p-f-p**)
or
dim./cresc.
(**f-p-f**)*

When the examiner requests a **major tonal centre**, the candidate should play in succession:

The major scale
The major arpeggio

When the examiner requests a **minor tonal centre**, the candidate should play in succession:

The melodic minor scale
The harmonic minor scale
The minor arpeggio

or iii) **Orchestral & brass band extracts**

See current syllabus for details

i) Lip flexibility exercise and chromatic scale

$\text{♩} = 72$

slide 1 (T1)

Repeat (descending) using the following slide combinations:

2nd – 3rd – 4th

Chromatic scale starting on pedal B (two octaves)

Grade 8 continued

ii) Scales & arpeggios

Chromatic scale starting on D (two octaves)



Dominant 7th in the key of E \flat (two octaves)



Dominant 7th in the key of E (two octaves)



B \flat major scale (two octaves)



B \flat major arpeggio (two octaves)



Grade 8 continued

B \flat harmonic minor scale (two octaves)



B \flat melodic minor scale (two octaves)



B \flat minor arpeggio (two octaves)

Chromatic scale starting on B \flat (two octaves)

Whole-tone scale starting on B \flat (two octaves)



Augmented arpeggio starting on B \flat (two octaves)



Diminished 7th starting on B \flat (two octaves)



Grade 8 continued

B major scale (two octaves)



B major arpeggio (two octaves)



B harmonic minor scale (two octaves)



B melodic minor scale (two octaves)



B minor arpeggio (two octaves)



Whole-tone scale starting on B (two octaves)



Augmented arpeggio starting on B (two octaves)



Diminished 7th starting on B (two octaves)



Grade 8 continued

Crabwise scale from F (two octaves – tongued or slurred as indicated)



Crabwise scale from pedal B \flat (two octaves – tongued or slurred as indicated)

